



ACCPA
Alberta Community
Crime Prevention Association

2017 ACCPA ANNUAL CONFERENCE
Partners in Crime: Building Partnerships
that Help Create Safe Communities

Collaborative Risk-Driven Intervention

Social Innovations in Community Safety and Well-Being

Navigating Information Sharing

with

Dr. Chad Nilson



CSWB

The state at which composite needs of a community's collective safety and overall well-being are achieved.

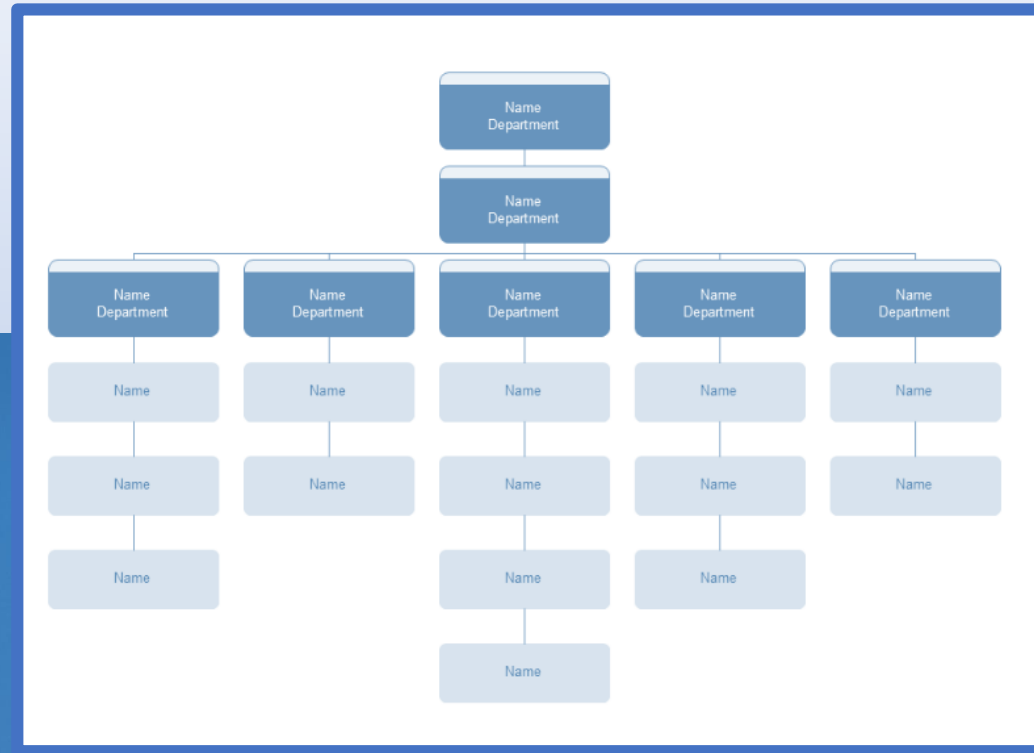
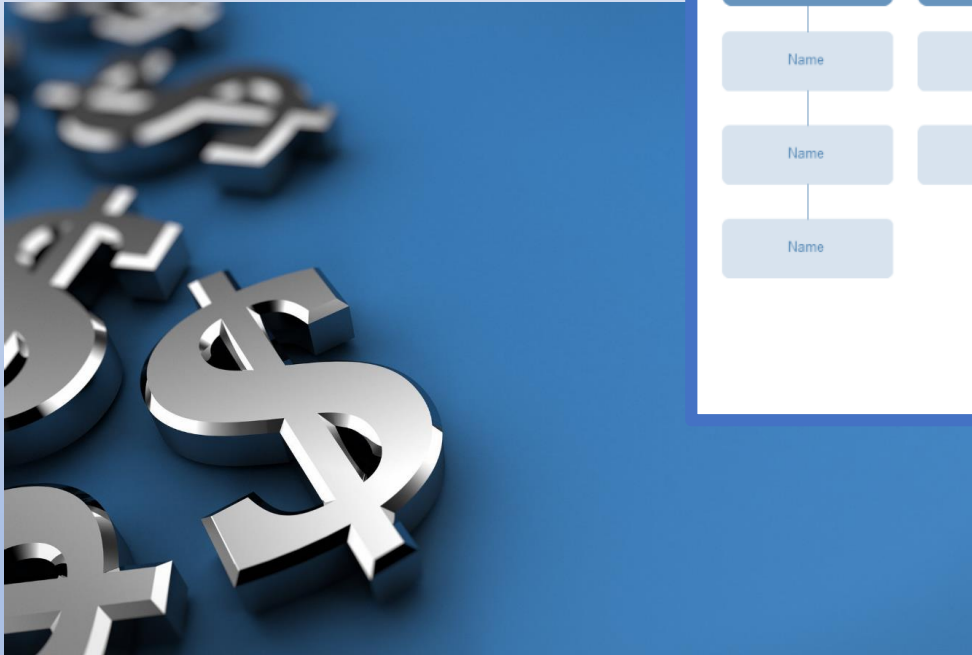
Changing our Perspective

Crime Prevention



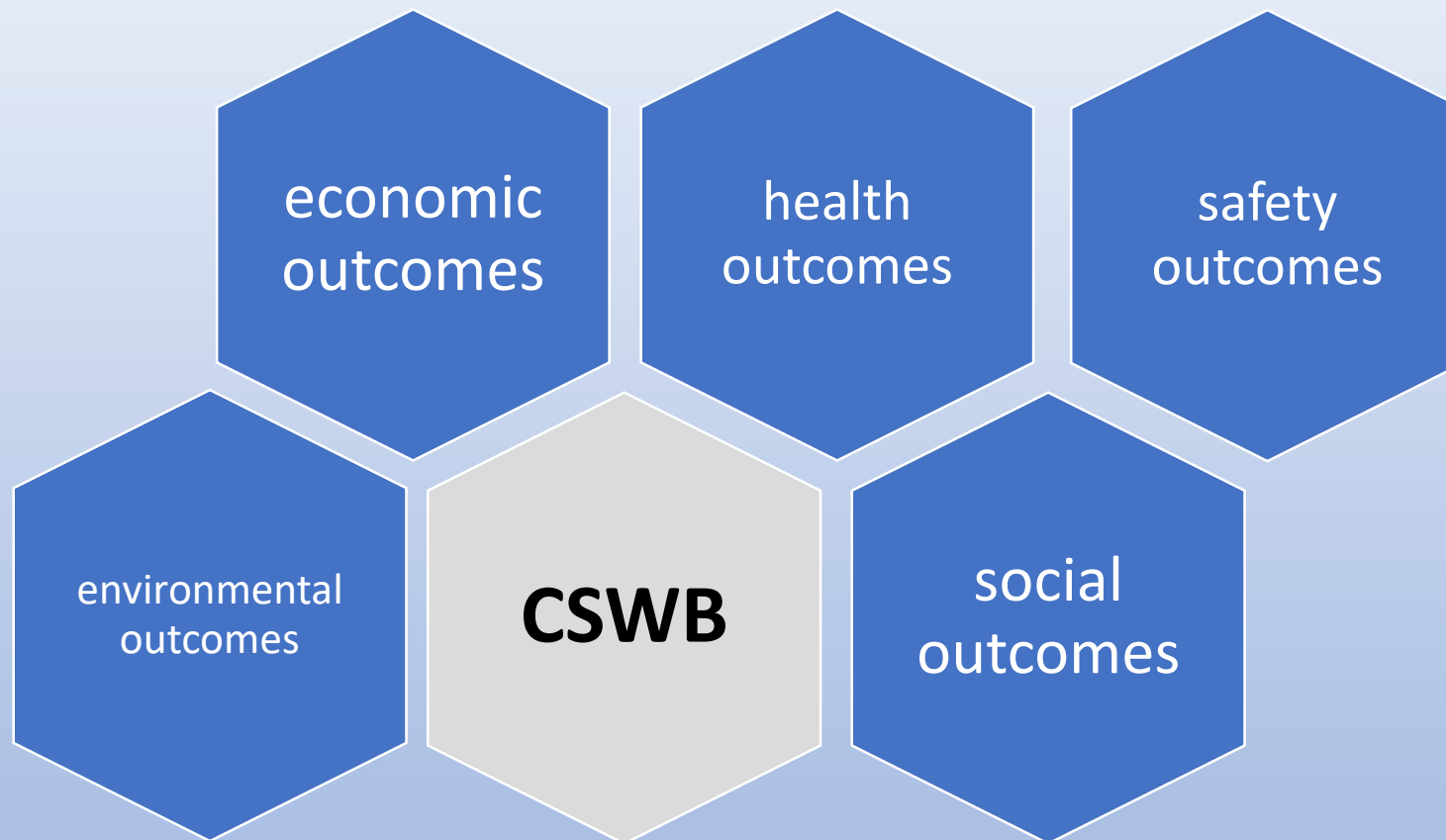
**Community Safety
& Well-Being**

police growth =
BIG



complex





Crime Prevention Lens

arrests convictions charges
breaches
SEIZURES
victimization
CRIME STATS
CALLS For Service

CSWB Lens

reLapSe

unemployment

injury

DEPRESSION

HOMELESSNESS
EMotional ViOLence

family stress
addiction

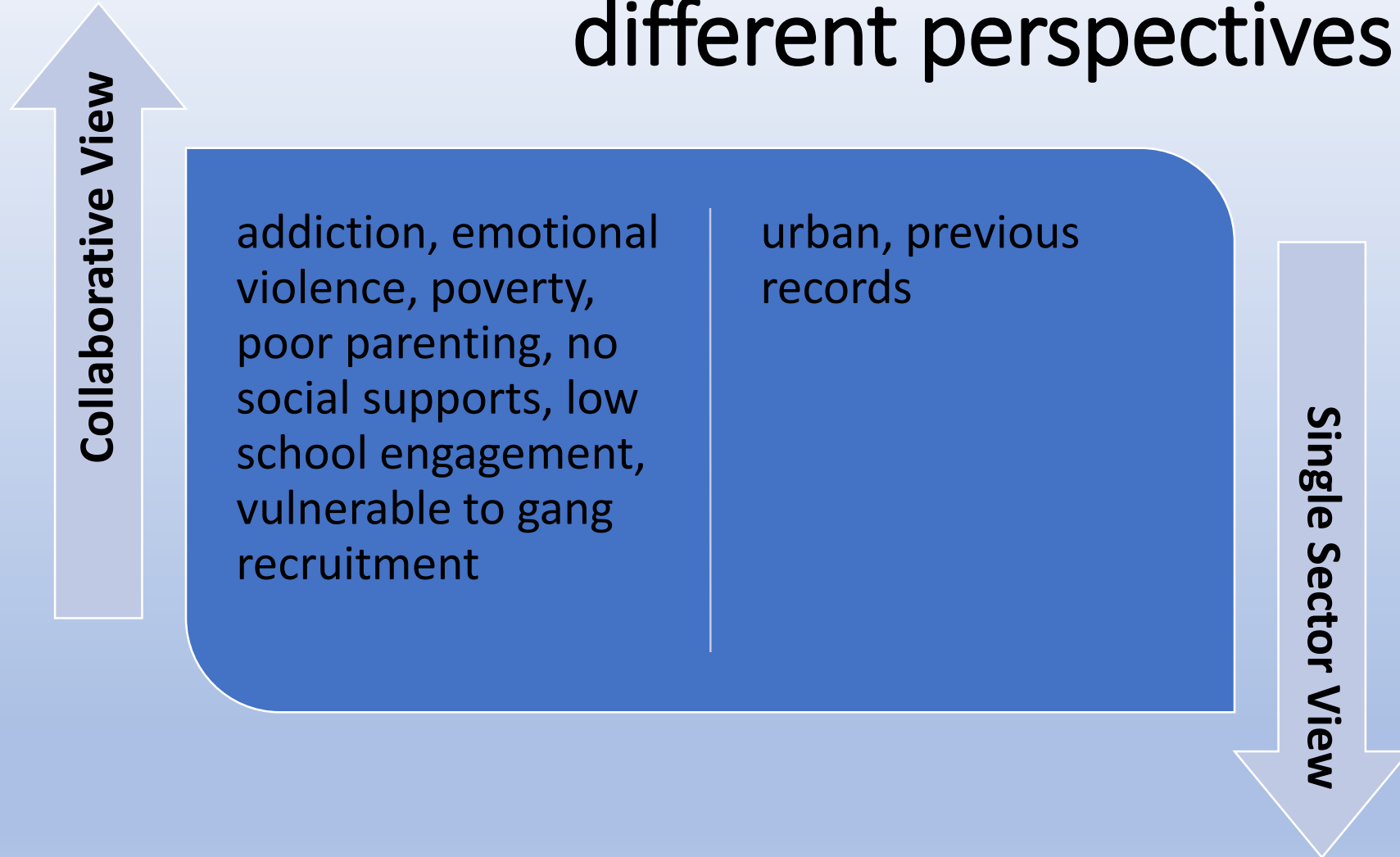
TRUANCY

DROPOUT

Success Indicators

recovery family strength
graduation
safety EMPLOYMENT sobriety
stable housing
MENTAL WELLNESS
Injury Free

different perspectives



Collaborative Risk-Driven Intervention



The Concept

An opportunity for human service providers to collaborate in a process of early risk detection, limited information sharing, and rapid intervention.



The Goal

To maximize the collective impact of multiple human service providers on community safety and well-being.



The Influence

research on
Collaboration



upstream
Intervention

Risk-Driven
focus

The Importance of Collaboration

- Legitimizes an issue.
- Creates synergy and teamwork.
- Closes service gaps.
- Builds community capacity.
- Broadens understanding of an issue.
- Brings in new knowledge.
- Improves service delivery and access.

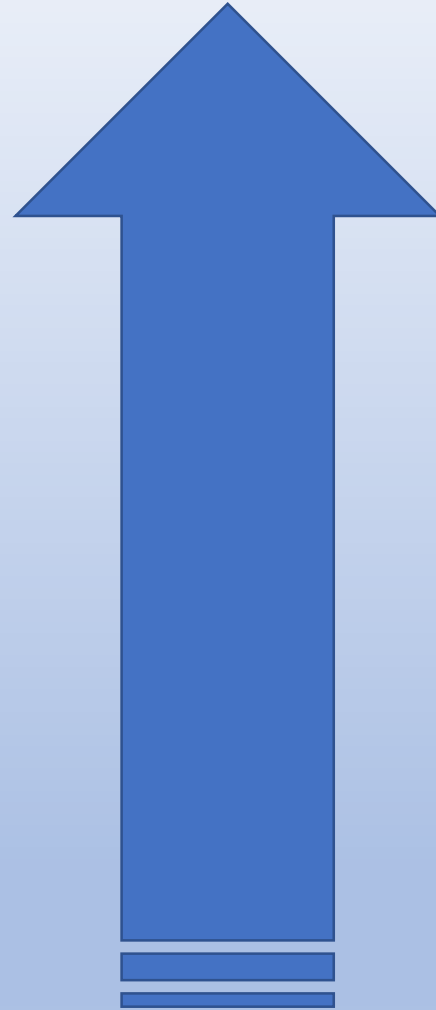


Innovation Out of Desperation

Prince Albert Hub

The Need

- Police calls for service
- Calls for ambulance
- Addiction
- Suicide risks
- Vulnerable children
- Elderly abuse
- Violence against persons
- Youth gang recruitment



The Journey

- Research on collaborative policing partnerships
- Community business plan for working together
- Mobilization of community partners
- Commitment of government
- Demonstrable need

.... But something was missing: validation

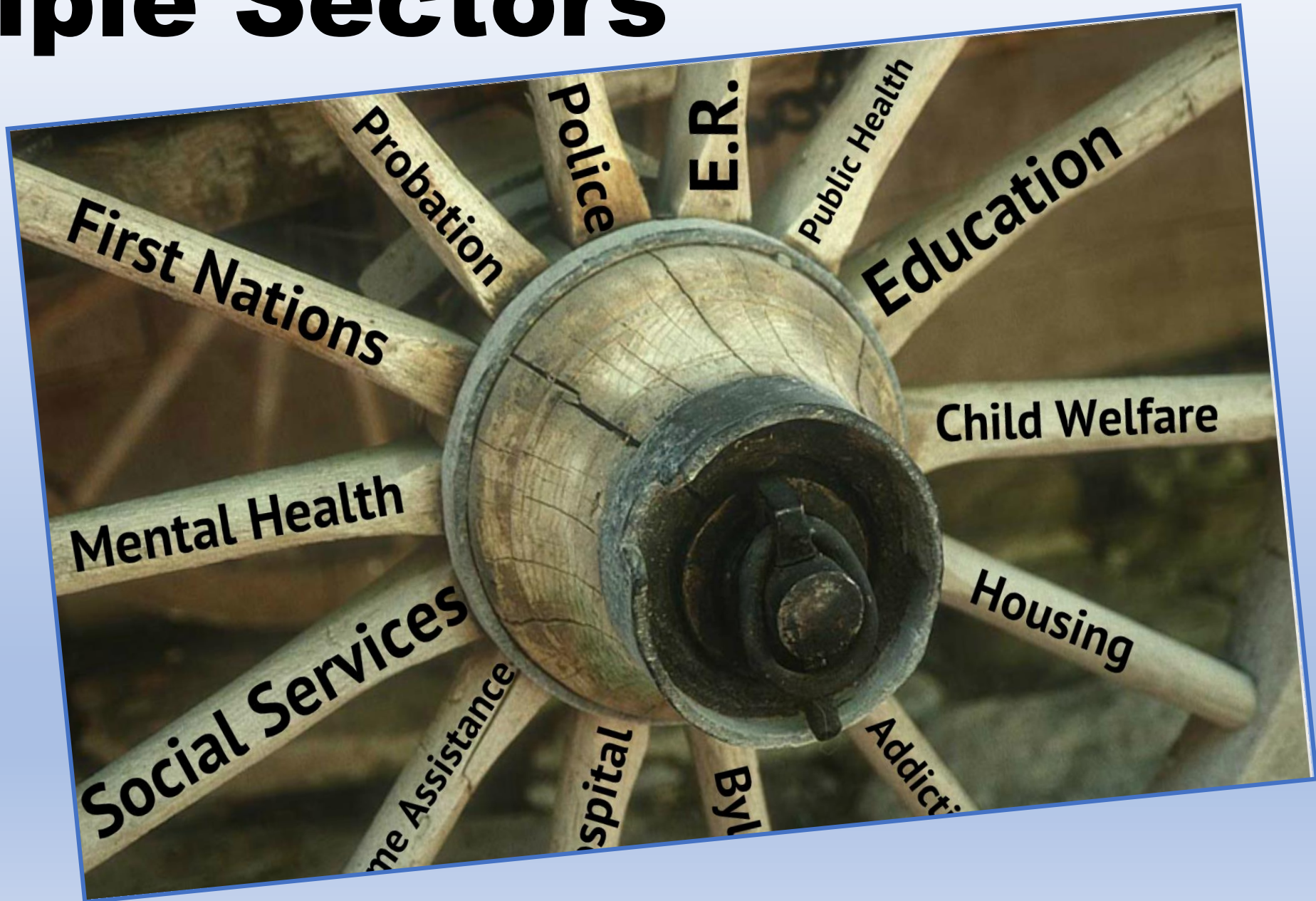
Glasgow



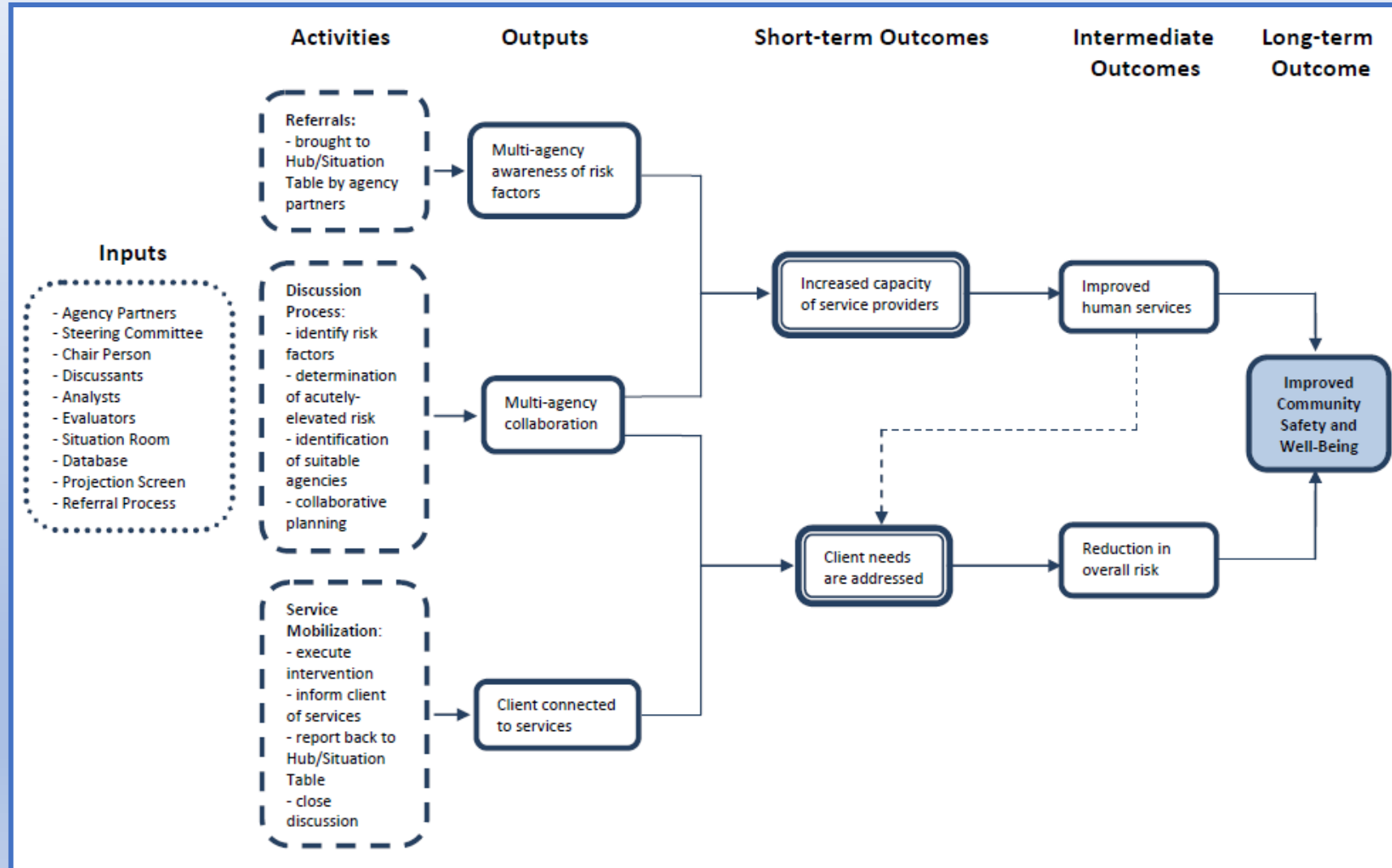
The Hub



Multiple Sectors



Program Theory



Hub Function

- Ongoing Risk Detection
- Limited Information Sharing
- Rapid Intervention



Risk Detection

- change in behaviour
- clustering of needs
- request for help
- unusual incident
- crisis
- systematic assessment

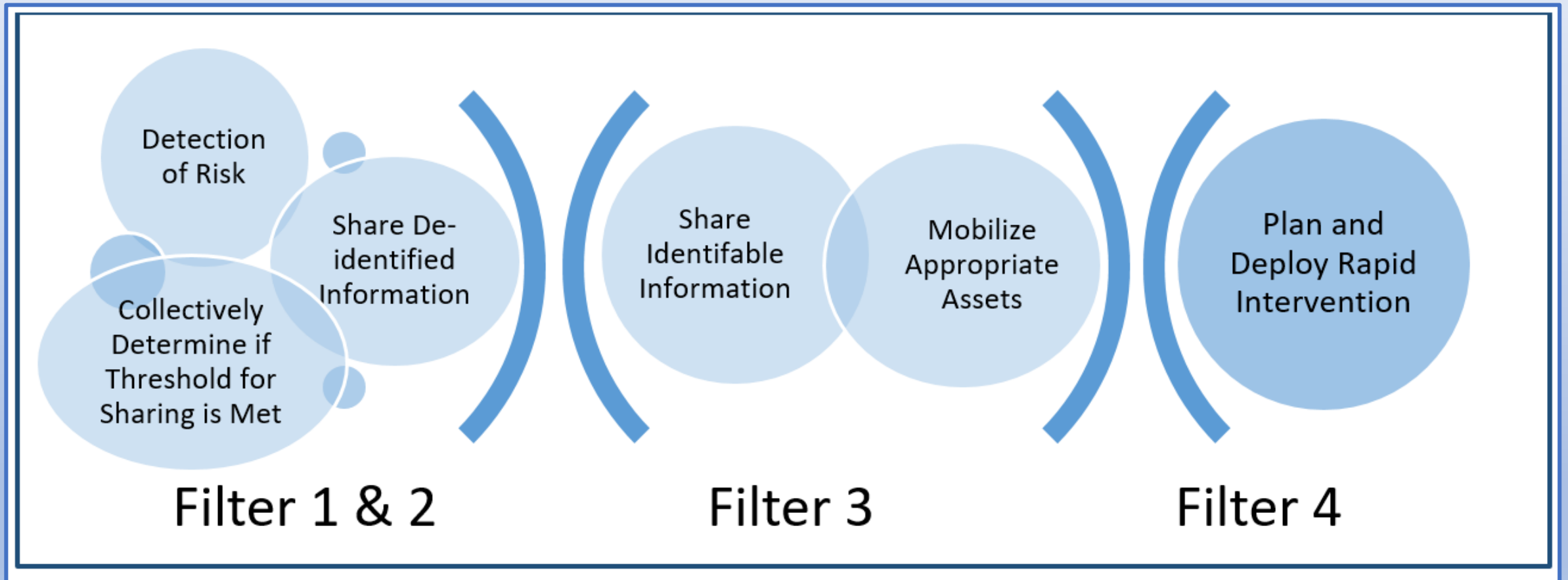
Risk Categories

alcohol drugs gambling mental health cognitive impairment physical health suicide self-harm criminal involvement	crime victimization physical violence emotional violence sexual violence elderly abuse supervision basic needs missing school parenting	housing poverty negative peers anti-social behaviour unemployment missing/runaway threat to public safety gangs social environment
--	---	--

Acutely Elevated Risk

- Significant interest at stake
- Probability of harm occurring
- Significant intensity of harm
- Multidisciplinary nature of elevated risk

Information Sharing

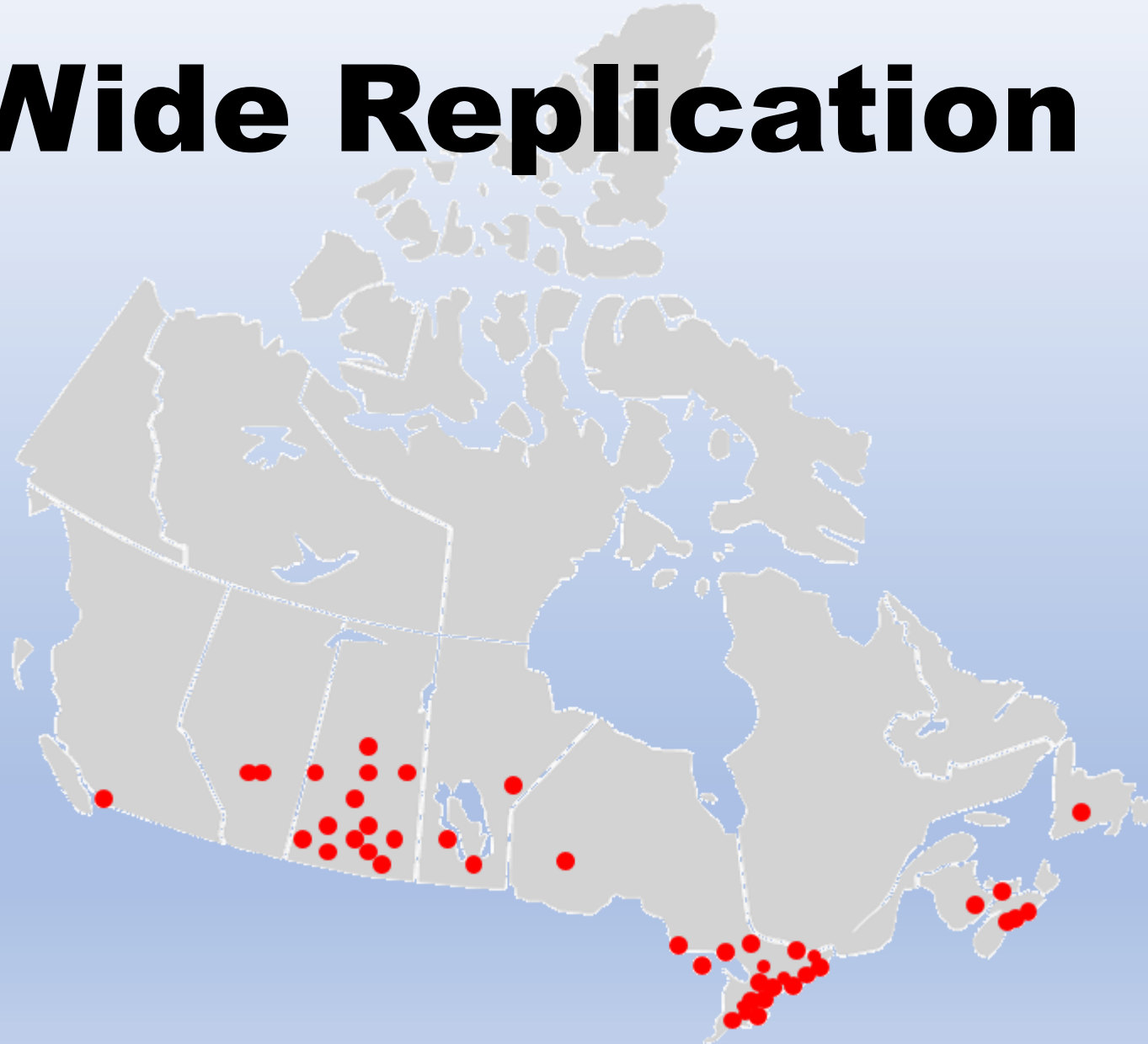


Rapid Intervention

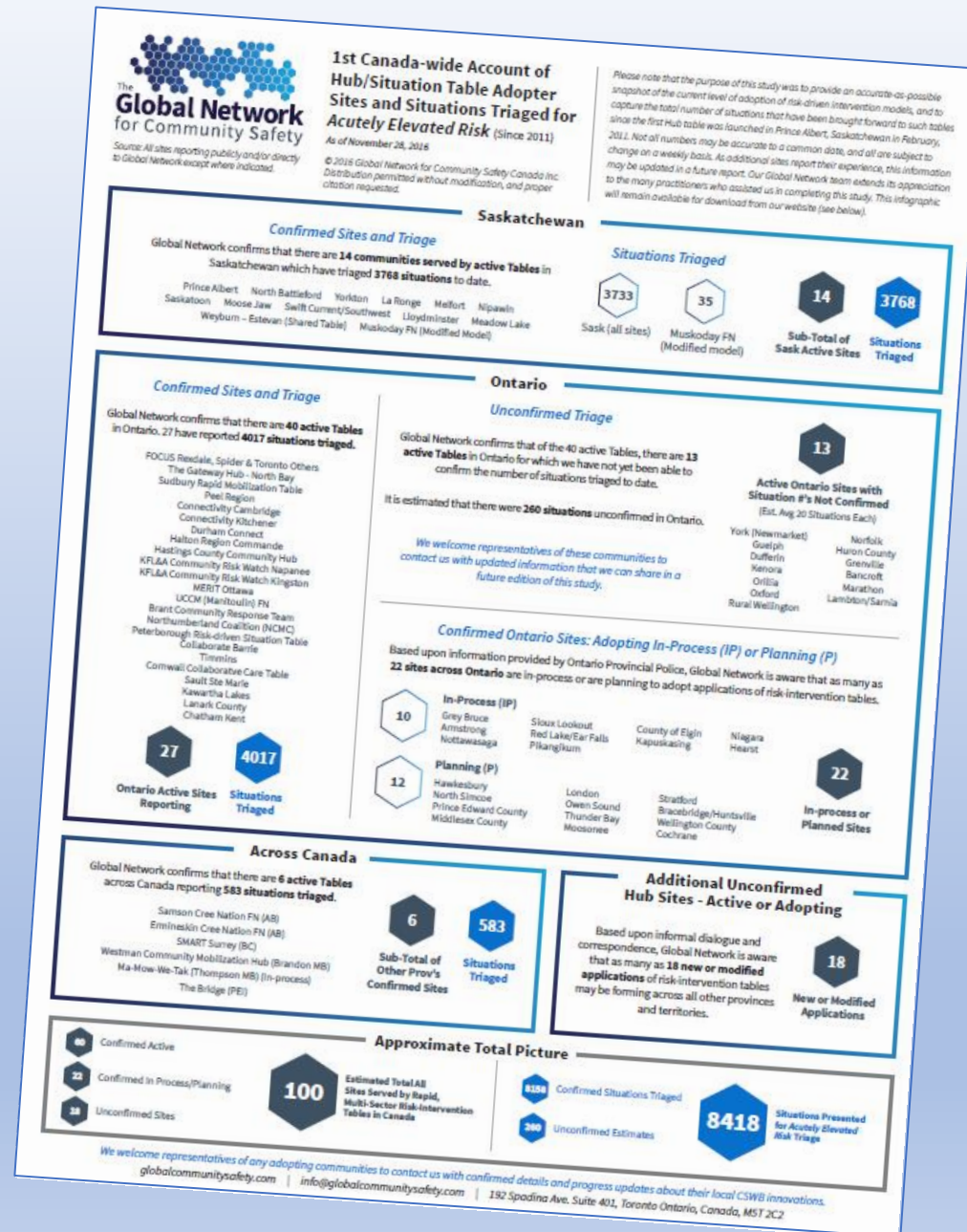
- Planning
- Deployment
- Debriefing
- Report Back to Table

Canada-Wide Replication

66



8,500+ situations Canada-Wide



First Nation Applications



But, what about...???



Efforts to Protect Privacy

- Follow *Four Filter Process*.
- Rigid information sharing protocol.
- Consultations with information sharing sector.
- Reviews by privacy officials.
- Works within existing policy.



8 Principles of Information Sharing

- Do no harm
- Duty of care
- Professional discipline
- Consistent purpose
- Expressed vs Implied consent
- Precise rules not possible/appropriate
- Due diligence
- Opportunities for reform

“... if sharing is done right, there is no prohibition to sharing personal information. It is not a question of a balance between information sharing and privacy. When it is permitted by law, information may be shared in order to provide health care without express consent being required, as, for example, pursuant to Ontario’s Personal Health Information Protection Act, section 40.1-3. “

**2015: Ontario Privacy Commissioner Brian Beamish
from the National Policy Makers Dialogue on Information Sharing**

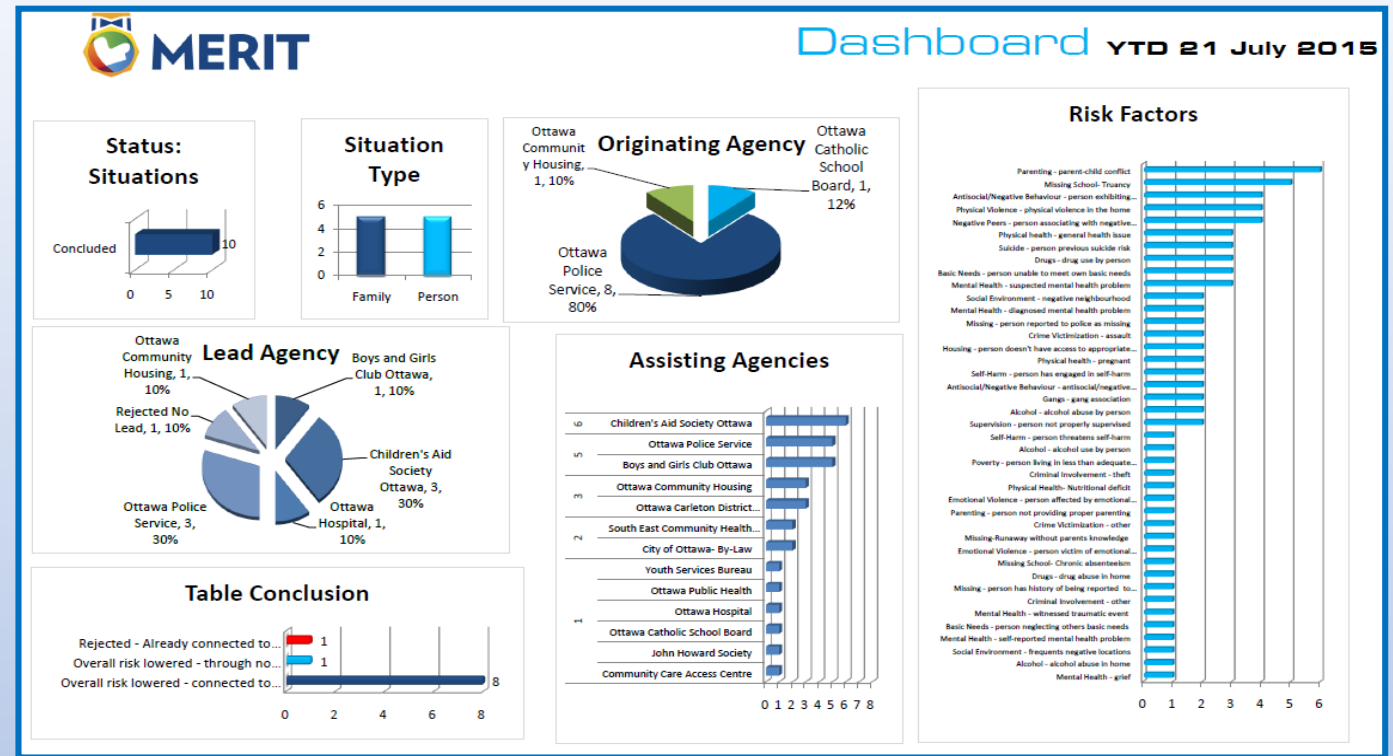
Measurement

- table data collection
- evaluation
- cost savings



Hub Database

- Risk factors
- Agency involvement
- Demographics
- Discussion progress



Past Evaluations

AUTHORS

COMMUNITIES

Nilson (2014)

Prince Albert, SK

Litchmore (2014)

Guelph, ON

Ng & Nerad (2015)

Toronto (Rexdale), ON

Brown & Newberry (2015)

Cambridge/Kitchener, ON

Babayan, et al (2015)

Brantford, ON

Gray (2016)

Lanark County, ON

Nilson (2016)

Samson Cree Nation, AB

Clement (2016)

Ottawa, ON

Nilson (2016)

Chatham-Kent, ON

Nilson (2017)

Barrie, ON

Evaluation Findings

- quicker access to services
- increased access to services
- improved communication
- reduction in barriers to information sharing
- improved working relationships
- clients feel supported
- service providers feel more effective
- improve client-service provider relations
- reduction in risk to more manageable level

Cost Savings

- Prince Albert: 2011 – 2015
- Reduction in violent & property crimes
- Society savings: \$12.9 MILLION



Journal of
COMMUNITY SAFETY & WELL-BEING

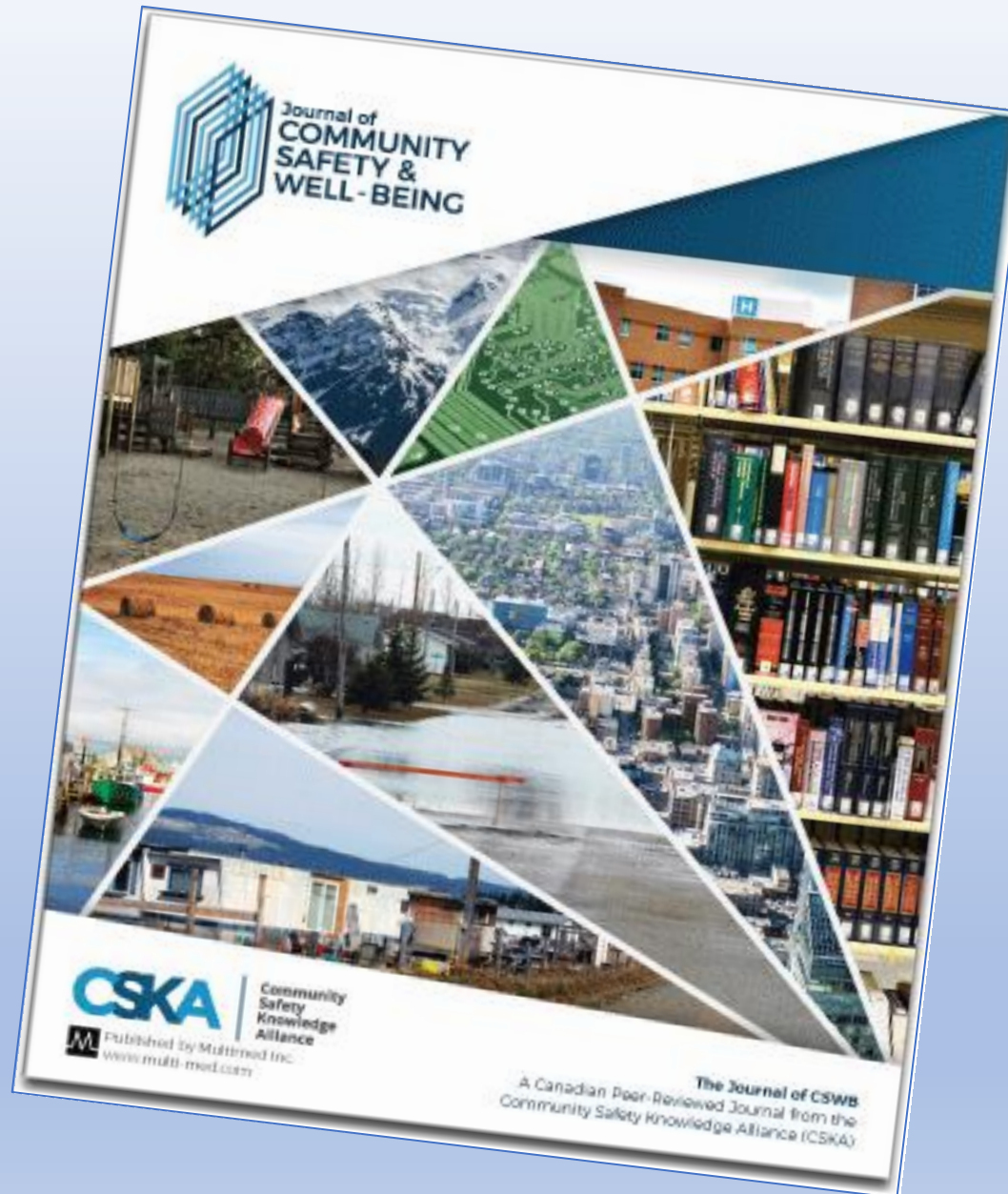
ORIGINAL RESEARCH

A quantitative study of Prince Albert's crime/risk reduction approach to community safety

Murray J. Sawatsky,* Rick Ruddell,* and Nicholas A. Jones*

What else is
occurring in
this shift
toward CSWB?

Journal of Community Safety and Well-Being



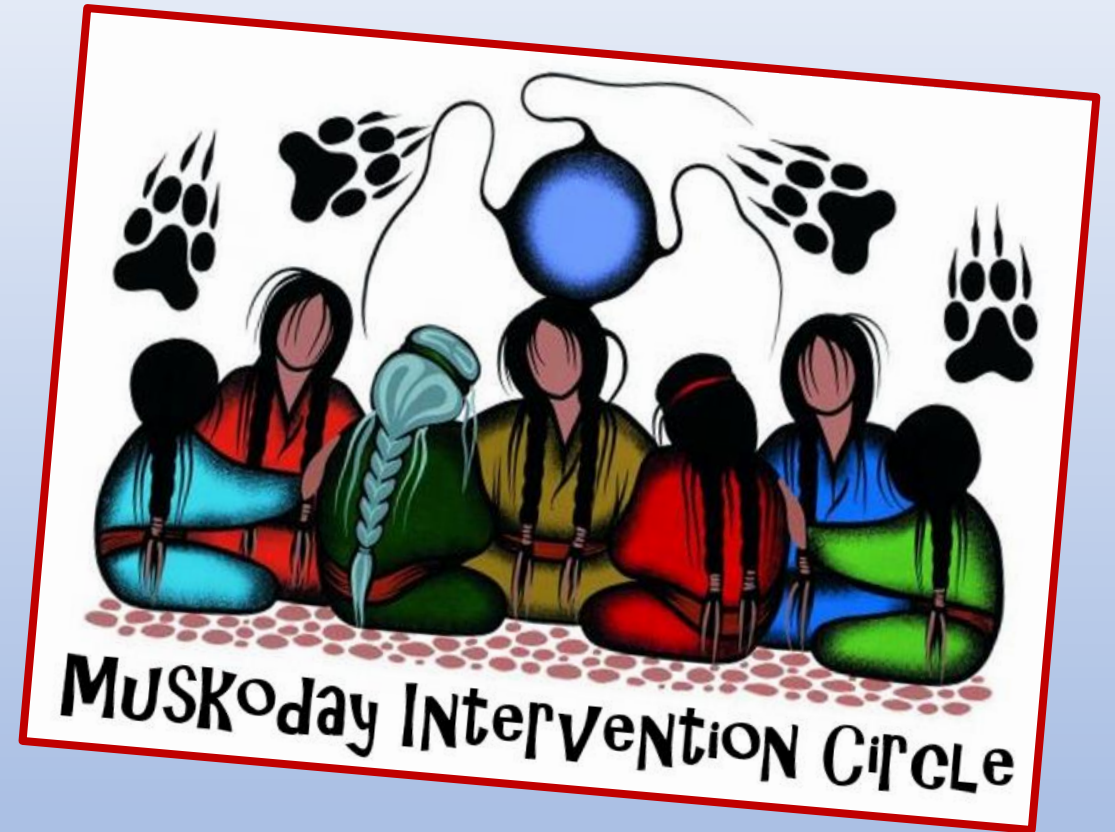
Sponsored Research

Collaborative Risk-Driven Intervention

REMOTE PRESENCE TECHNOLOGY

Data SHaring





Enhancements to
the Hub Model

Collaborative
system-level
solutions to
improving CSWB



Hub Model Training



Questions & Discussion



Dr. Chad Nilson

306-953-8384

chad@globalcommunitysafety.com